



Sterisil® products are approved¹ for any dental unit



STERISIL® PRODUCTS ARE COMPATIBLE WITH A-DEC® DENTAL CHAIR EQUIPMENT

The rumors of incompatibility between Sterisil® waterline products and A-dec's chairs are merely that, rumors. A-dec's own EPA Registered Label for ICX® states, "This product is intended for use with potable water and in conjunction with regular dental unit water testing, following flush (shock) treatment with an antimicrobial product registered with the U.S. EPA..."² A-dec's Instructions for Use and Waterline Maintenance Guide recognize these same EPA mandates. Consistent with such mandates, Sterisil's Shock product is, in fact, EPA registered, and is manufactured to meet or exceed A-dec's requirements. Furthermore, all Sterisil maintenance products contain the same active ingredient as our Shock product, and they are EPA registered as well.

ICX AND WATER TESTING

ICX's EPA registration label requires that ICX be used with potable water and in conjunction with regular dental unit water testing. Sterisil now offers in-office and mail-in water testing options through your local dental dealer.

STERISIL® TREATMENT PRODUCTS ARE:

- The only dental waterline maintenance products to include an EPA registered shock treatment, unlike ICX tablets
- EPA registered for dental waterline maintenance
- Harmless to dental units and handpieces when used as directed

LEADING THE WATERLINE COMPLIANCE CATEGORY THROUGH:

- Effective EPA registered treatment products
- Efficient clinician-focused usage protocols
- Comprehensive water testing and analysis

¹See EPA registration 83315-2

²A-dec ICX EPA Label 79662-1, https://www3.epa.gov/pesticides/chem_search/ppls/079662-00001-20151230.pdf

³SDM Northcoast, LLC, Dental Water Treatment October & November - Brand Market Share, www.dental.sdmnorthcoast.com

For more information contact your Sterisil® sales representative or local dealer.

1-800-216-5505 or at Solmetex.com

POWERED BY:



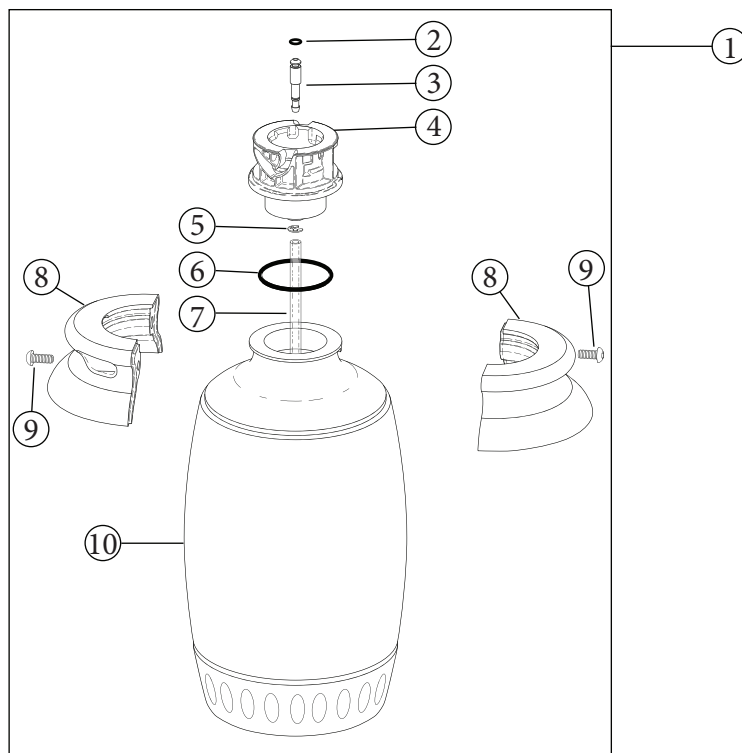
Solmetex®
Sterisil®
DryShield®

How to Install the Sterisil® Straw with the A-dec 500 and 300 Bottles

DIRECTIONS

1. Locate the clamp (8) and the two screws (9)
2. Unscrew both screws (9) and pull apart the clamp (8)
3. You now can pull up on the receptacle (4) and access the existing pick up tube (7)
4. Remove existing pick up tube (7) by making a small slit where the tubing connects to the barbed fitting.
5. Attach Sterisil Straw to the blue 1/4" pick up tube provided
6. Cut the 1/4" pick up tube to the appropriate length so the Sterisil Straw extends about 1/4" from the bottom of the bottle.
7. Slide the Sterisil Straw inside the bottle and reconnect the clamp.

Note: Use care when servicing this water bottle, be sure to align the clamp with the detent on the bottle to successfully reassemble the parts without causing damage.



REF #	DESCRIPTION
1	Water Bottle Assembly
2	O-ring
3	Connector, water
4	Receptacle
5	Retaining ring
6	O-ring
7	Tube, supply, 8" long
8	Clamp, water bottle
9	Screw, button head socket, 10-32 x 1/2
10	Water bottle with base

STL-MKT-COL-269Rev4

For more information contact your Sterisil® sales representative or local dealer.

1-800-216-5505 or at **Solmetex.com**

POWERED BY:

 **Solmetex**
Dentistry's Complete
Provider of Water Solutions

Solmetex®
Sterisil®
DryShield®