



SHOCK TEST MAINTAIN

Citrisil® Dental Waterline Microbial Contaminant Control Tablet

All-in-One

EVERYDAY
VALUE 4-PACK



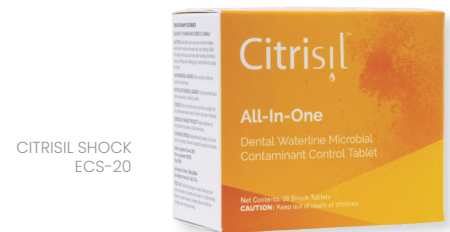
Citrisil available in a single box and in an Everyday Value 4-pack which includes 1 free box.

KEY FEATURES

- Cleans and maintains dental unit waterlines to ≤ 10 CFU/ml
- Shock tablets included to eliminate odor-causing bacteria
- Eliminates the need to empty bottles and purge lines at the end of each day
- Safe for dental equipment, patients, and staff
- Does not adversely affect composite bond strength
- Does not contain oxidizers like iodine or chlorine
- Available for bottles ranging from .70L through 2L bottles

Citrisil® Shock

- No messy liquids or mixing
- Most affordable at less than \$3.00/tablet
- Compatible with the Sterisil® Straw. No need for a dummy straw for easy shocking
- Cleans the inner surface of dental bottles
- Orange colorant makes the shock visually apparent in the bottle for easy visual flushing
- Chemically compatible with the Sterisil® Antimicrobial Bottle with built-in antimicrobial properties to protect the bottle



THIS PROVIDES ADDED PROTECTION WHILE WAITING FOR R2A TEST RESULTS AND HELPS REDUCE BIOFILM REGROWTH MONTHLY

Solmetex
System of
Solutions

Source
Water
Quality



Dental Unit
Waterline
Management



Isolation
and Aerosol
Control



Evacuation



Amalgam
Capture and
Recycling



Waste
Management



Every
Drop
Matters™





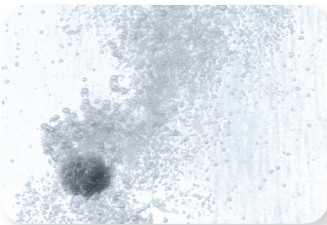
Protect your patients and staff against bacteria

Citrisil™ is the only all-in-one shock and daily maintenance dental waterline tablet.

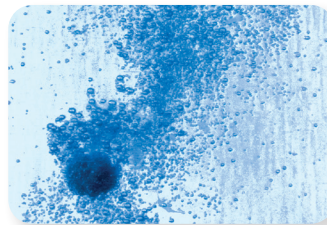
Orange Shock Tablet should be used monthly and left overnight to eliminate pre-existing odor causing bacteria.

White or Blue Maintenance Tablets should be used daily to continuously clean and maintain dental unit waterlines.

- Use a maintenance tablet each time a bottle is refilled
- The tablet effervesces and remains in the lines to prevent bacteria growth

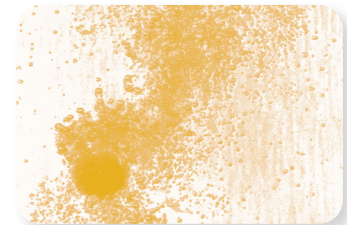


White Tablet



Blue Tablet

48 MAINTENANCE TABLETS



Shock Treatment

2 SHOCK TABLETS
INCLUDED WITH EACH BOX

PART #	TYPE	DESCRIPTION
C50-W	White Maintenance Tablets	(48) White Maintenance Tablets & (2) Shock Tablets, for .70–1L bottles
C50-2W	White Maintenance Tablets	(48) White Maintenance Tablets & (2) Shock Tablets, for bottles ranging from 1L+ to 2L capacity
C50-B	Blue Maintenance Tablets	(48) Blue Maintenance Tablets & (2) Shock Tablets, for .70–1L bottles
C50-2B	Blue Maintenance Tablets	(48) White Maintenance Tablets & (2) Shock Tablets, for bottles ranging from 1L+ to 2L capacity
ECS-20	Shock Tablets	(20) Shock Tablets
ECS-4	Shock Tablets	(4) Shock Tablets
C50-W-VAL4	White Maintenance Tablets	4 Pack White 1L
C50-B-VAL4	Blue Maintenance Tablets	4 Pack Blue 1L
C50-2W-VAL4	White Maintenance Tablets	4 Pack White 2L
C50-2B-VAL4	Blue Maintenance Tablets	4 Pack Blue 2L



SCAN TO DOCUMENT TEST RESULTS

Sterisil recommends following the CDC, OSAP, ADA, and OSHA guidelines to document water monitoring results. Find test logs and support at My Solutions Center.

Sterisil, Inc.
4220 Mark Dabling Rd.
Colorado Springs, CO 80907
+1 719 622 7200

EPA Reg. No. 83315-2
Patent No. 6,991,736

STL-MKT-COL-308Rev5

**ORDER AND
LEARN MORE**



Solmetex®
Dentistry's Complete
Provider of Water Solutions

Solmetex®
Sterisil®
DryShield®