



G

5



INSTALLATION AND
MAINTENANCE MANUAL

TABLE OF CONTENTS

Introduction	3
Before you Begin	4
Phase 1: Unpacking and Inventory	7
Phase 2: Mounting and Peripheral Components	8
Phase 3: Cartridges	11
Phase 4: Source Water and Tubing	11
Phase 5: Powering Up, Programming the Touchscreen and Filling the Tanks	12
Operational Test	13
Optional Add-ons	14
Maintenance Manual	16
Sterisil Limited Warranty	18

INSTALLATION



Visit sterisil.com/sterisil-system-g5 to view the System installation video.

NEED HELP OR HAVE QUESTIONS?

Our technical support staff is available and ready to help. Please call, email, or visit us online for additional support.



719 622 7200



support@sterisil.com



sterisil.com

PRECAUTIONARY STATEMENT: Using the system in a manner outside the scope of the intended use, as specified in this manual, may impair or nullify the protection provided.

INTENDED USE: WATER TREATMENT:

The Sterisil® System G5 uses six stages of purification and Class A UV Light disinfection to provide on-demand treated dental water for any dental practice. The System provides continual treatment and ensures dental water quality ≤ 10 CFU/mL HPC bacteria. The System provides full live diagnostics and monitoring.

⚠ WARNING: This product can expose you to mercury, which is known to the State of California to cause birth defects or other reproductive harm. For more information go to www.P65Warnings.ca.gov.

835 S Highway 105 Suite D
Palmer Lake, CO 80133

Office: 719 622 7200
Fax: 866 299 2495

INTRODUCTION

The Sterisil® System G5 takes the existing 6 stages of water treatment found in our G4 Systems and merges them with an on-board Class A ultraviolet disinfectant and integrated smart technology. The result is the most advanced dental water treatment system in the world.

The G5 employs Sterisil's proven silver based residual treatment delivering a class leading EPA claim of ≤ 10 CFU per ml heterotrophic plate count (HPC) purity; that's 50 times lower than the acceptable standard set forth by CDC and ADA. In addition, the G5 is the only dental water system in the world to feature Class A ultraviolet (UV) disinfection capable of killing 99.99% of bacteria and viruses.* That's class leading treatment without tablets or daily additives and only 10 minutes of annual maintenance.

Integrated smart technology allows for live, 24/7 monitoring and alerts accessed anytime via the PC app or touchscreen. Users can also view real time data from a network of on-board sensors for convenient system health monitoring. In the event of a maintenance alert, users can access built-in troubleshooting guides pertaining to their specific error for quick and easy resolution.



IMPORTANT

Sections marked with the red triangle icon contain information that must be taken into consideration before installation.



BOTTLE FILL AND DIRECT FEED COMPARISON

The G5 can be configured for independent bottle reservoirs or municipal direct feed depending on the office configuration. Throughout this manual, designated sections specific to the direct feed configuration will be highlighted in blue with the blue triangle icon. Pay specific attention to the plumbing of dental water with direct feed systems as they are significantly different from their bottle fill counterparts.

Sterisil offers optional add-ons to the G5 to ensure proper performance. Installation of these items can be found on page 14. Optional add-ons are called out in each relevant section by the color purple. Specific requirements for add-ons must be understood before starting the installation.

Optional Add-On Components	
In-Wall Dispensing Station	(14"L x 4"W x 30"H") (35.6cm L x 10.2cm W x 76.2cm H) space, within 50' (15.2 meters) of the System
Sterisil® Wand	Autoclave must be within 10' (3 meters) of the System
Pre-filter Kit	(5"Dia x 12"H) (12.7cm DIA x 30.5cm H), Suggested use with source water quality > 250ppm TDS
Booster Pump	(4"Dia x 7"H) (10.2cm DIA x 17.8cm H), Suggested use with source water pressure < 60 PSI (413.7 kPa)

* Chevreffils, G., B.Ing, Caron, E., B.Sc., Wright, H., Sakamoto, G., Payment, P., Barbeau, B., & Cairns, B. (2006). UV Dose Required to Achieve Incremental Log Inactivation of Bacteria, Protozoa and Viruses. IJVA News,8, 1st ser., 38-45.

BEFORE YOU BEGIN

INITIAL INSTALLATION CONSIDERATIONS

IMPORTANT TO THE OWNER

We recommend a certified Sterisil® installer, professional technician, or plumber familiar with dental offices perform the installation since interfacing with a cold water line and drain is involved. He/she should be familiar with local plumbing codes and techniques for successful dental equipment installations.

Please keep the installation and maintenance manual on-hand for future reference. Ensure those responsible for operation and maintenance of the system are familiar with all details contained in this manual. Please return the warranty registration form via mail or register online at sterisil.com/warranty immediately upon installation. The Sterisil® System G5 requires power to produce water. In the event of a power outage, water will still be dispensed but will not be replenished until power is restored.

IMPORTANT TO THE INSTALLER

Please read the entire installation and maintenance manual and watch the installation video at sterisil.com/sterisil-system-g5 before proceeding with the installation and initial operation. Always follow local plumbing codes and municipal regulations. Familiarize yourself with the G5 drawings and diagrams included.

The G5 can be installed nearly anywhere in the typical dental, medical, lab, or hospital setting, typically near a faucet and sink. The system and tanks are designed to fit under a counter-top, but can be installed anywhere there is a quality, cold water supply and drain connection. Please locate the system serial label on the left panel of the unit or go to the settings tab on the touchscreen. Record the installation date on the warranty card. Please ensure you send in the warranty card or register online.

The initial set up can take up to 3–5 hours depending on customer specifications. Ensure the lengths of tubing provided will meet the needs of your specific configuration. All tubing cuts should be made at a right angle to the tubing itself. Be sure to inspect the ends for burrs before establishing a connection.

TREATMENT CONTINGENCIES

If for any reason, the effectiveness of treatment provided by the system were to be called into question, Sterisil recommends the clinic have a contingency plan to bypass the unit for dental water treatment.

SYSTEMS CONFIGURED FOR BOTTLE FILL

Systems configured for bottle fill should have a 1 month supply of Citrisil maintenance tablets on hand for each chair to facilitate treatment without the G5 as the primary method. Should the need arise, contact Sterisil customer support immediately and be prepared to transition to Citrisil tablets at their request.

SYSTEMS CONFIGURED FOR DIRECT FEED

Systems configured for direct feed should contact Sterisil technical support (719.622.7200) for information on how best to proceed. In the event that treated water may be compromised, a bypass valve can be utilized. However, Sterisil does not recommend continuing operations without properly treated water as it may pose a potential health risk to patients.

General Sterisil® System G5 Requirements

Maximum Pressure	125 PSI (861.8 kPa)
Minimum Pressure	60 PSI (413.7 kPa)
Optimal Temp. Range	45 °F–100 °F (7.2°C-37.8°C)
Max. Source TDS	800ppm
Max. Daily Flow Rate	50 gal/day (189.3 L/day)
Opt. Flow Rate Range	0.1 mL/min–2.5 L/min
Electrical and Internet Connectivity	Double outlet 110V AC, 3 amp, GFCI, within 5' from System, Wi-Fi or Ethernet connection. Wi-Fi signal strength should be tested before installing the System.
Bladder Tank Space	Tank 2G: 9"Dia x 12"H (22.8cm DIA x 30.5cm H) Tank 4G: 12"Dia x 15"H (30.5cm DIA x 38.1cm H) Tank 10G: 13"Dia x 21"H (33 cm Dia x 53.3 cm H) Tank 14G: 15.25"Dia x 23"H (38.7cm Dia x 58.4cm H)
Internet Enabled Computer	PC or Mac



INITIAL SETUP AND BASELINE REQUIREMENTS

For the system to fit functionally in its mounting, it will require at least:

- 27" (68.6cm) in height
- 24" (61cm) in length
- 11" (28cm) in depth

These dimensions allow 2" (5.1cm) of space on all sides of the system.



DIRECT FEED SPECIFIC REQUIREMENTS



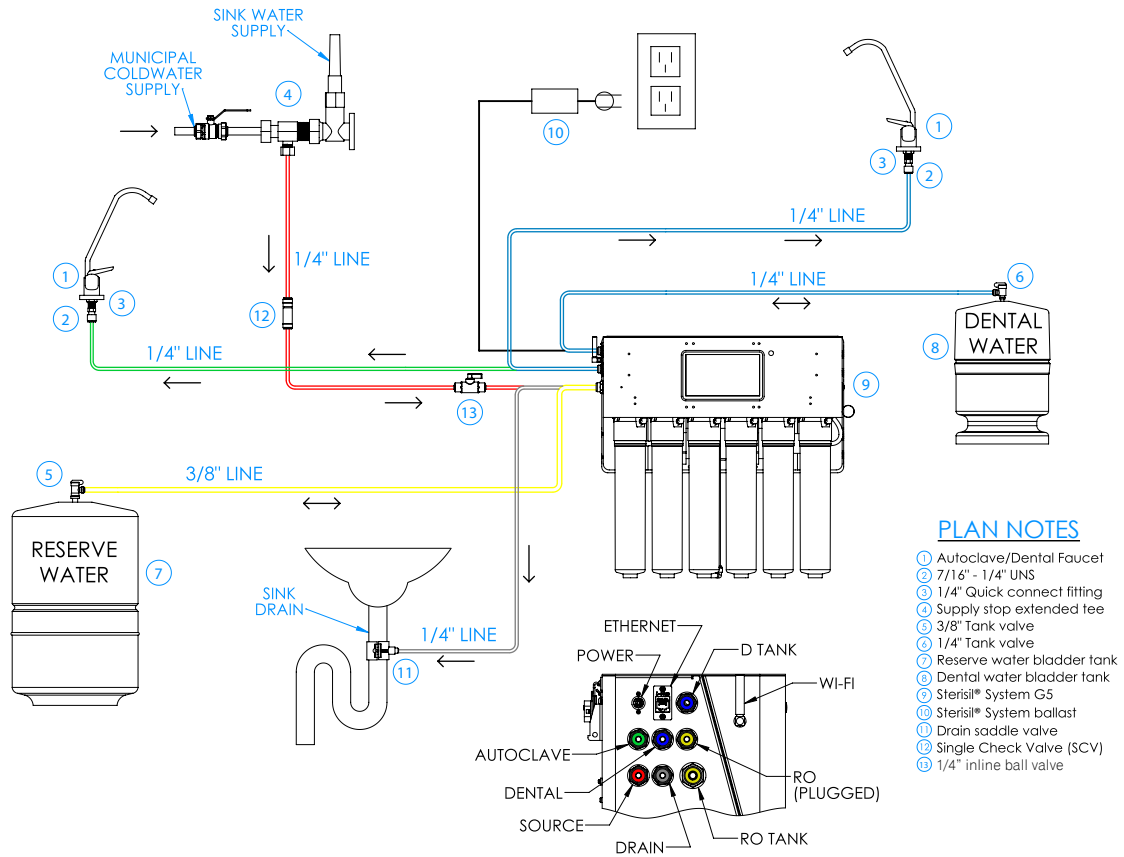
Dental Water Supply Tubing:
(Customer Supplied)

- Tubing diameter for delivery of treated water should not exceed 1/4" (0.635cm)
- The furthest chair should not exceed 50' (15.2 meters) from the system
- Recommended use of PVC or PEX A FIRE Rated tubing
- No brass or copper plumbing components may be used downstream of the system

Source Water Bypass:
(Customer Supplied)

A source water bypass should be installed by a plumber or technician to bypass the System if necessary.

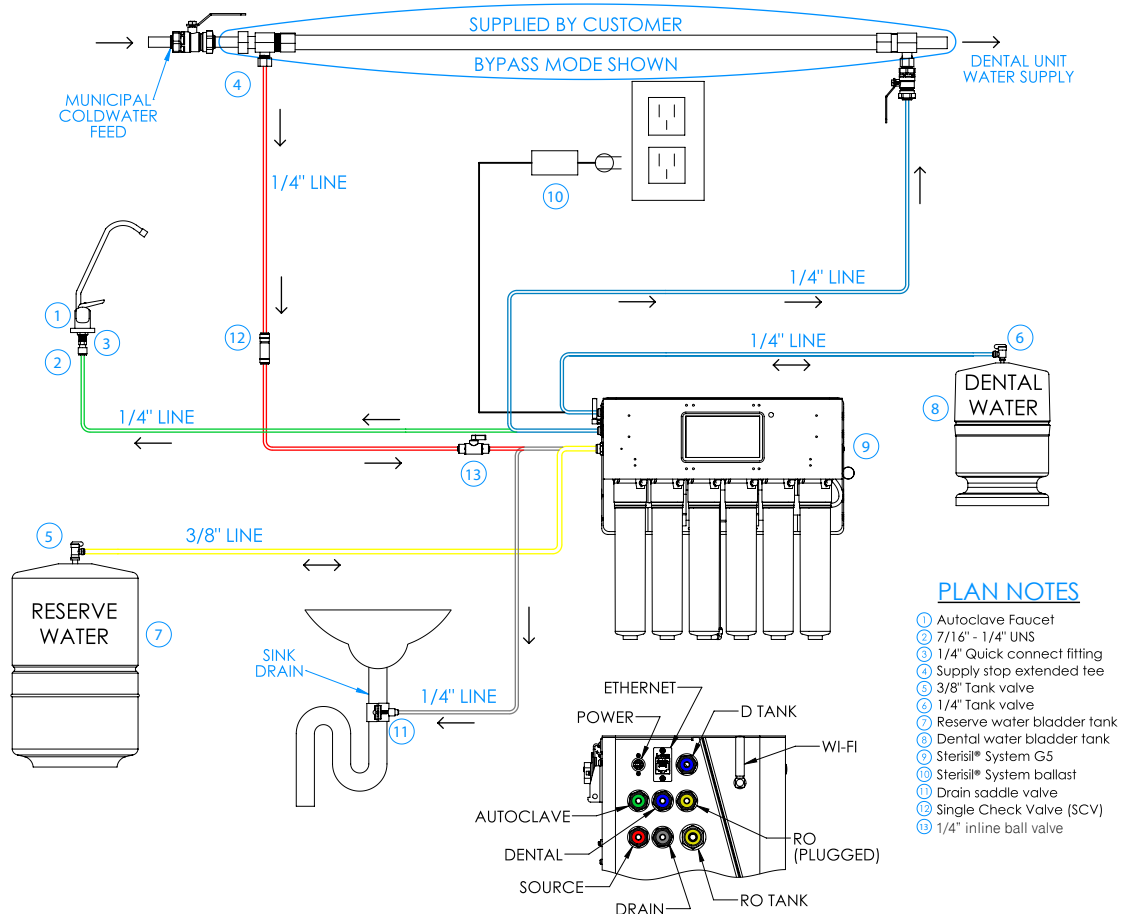
Bottle Fill Installation



PLAN NOTES

- ① Autoclave/Dental Faucet
- ② 7/16" - 1/4" UNS
- ③ 1/4" Quick connect fitting
- ④ Supply stop extended tee
- ⑤ 3/8" Tank valve
- ⑥ 1/4" Tank valve
- ⑦ Reserve water bladder tank
- ⑧ Dental water bladder tank
- ⑨ Sterisil® System G5
- ⑩ Sterisil® System ballast
- ⑪ Drain saddle valve
- ⑫ Single Check Valve (SCV)
- ⑬ 1/4" inline ball valve

Direct Feed Installation



PLAN NOTES

- ① Autoclave Faucet
- ② 7/16" - 1/4" UNS
- ③ 1/4" Quick connect fitting
- ④ Supply stop extended tee
- ⑤ 3/8" Tank valve
- ⑥ 1/4" Tank valve
- ⑦ Reserve water bladder tank
- ⑧ Dental water bladder tank
- ⑨ Sterisil® System G5
- ⑩ Sterisil® System ballast
- ⑪ Drain saddle valve
- ⑫ Single Check Valve (SCV)
- ⑬ 1/4" inline ball valve

PHASE 1: UNPACKING AND INVENTORY

Carefully unpack the contents of the boxes. One box will include the Sterisil® System G5. The second box will contain the installation manual, warranty registration card, and assorted bags containing other needed items for installation, including mounting system for static, slides, and articulating mount. Each water storage tank will be shipped separately.

VERIFY THERE WAS NO DAMAGE DURING SHIPMENT. IF DAMAGE IS EVIDENT, CONTACT THE SHIPPING COMPANY IMMEDIATELY.

TOOLS

Tools required for installation:

- Phillips head screwdriver
- Standard open end/box end wrenches ranging from 1/2" to 3/4"
- Small to medium size adjustable wrench
- Standard hex key set
- Box knife
- Hand drill
- Phillips driver bits
- Universal drill bits: sizes 1/8" to 1/2" standard
- Level
- Schrader valved pressure gauge
- Low volume air pump

INVENTORY ITEMS MAY VARY DEPENDING ON SYSTEM SELECTION AND SPECIFIC PARAMETERS.

BOX 1: UNIT

Sterisil® System G5

BOX 2: ACCESSORIES

10 ft (3 meters) 3/8" tubing

20 ft (6.1 meters) 1/4" tubing

System power supply

Autoclave faucet

Dental faucet

Cartridges (Stage 1, 2, 3, 4 [x2], 5)

Blank Cartridge and clip

System mount (Static, Sliding or Articulating)

Bag A

Bag B.1

Bag B.2

Bag B.3

Bag C

Bag D

Bag E

BOX 3

Dental Water Storage Tank

BOX 4:

RO Water Storage Tank

PHASE 2: MOUNTING AND PERIPHERAL COMPONENTS

PINCHING HAZARD: Before beginning this process take note to keep hands, hair, and exposed skin away from seams in the sheet metal or other components that might pose a potential pinching hazard.

CONSIDERATIONS PRIOR TO MOUNTING

The location of your Sterisil® System G5 needs the following considerations:

- Distance to the water supply
- Leave enough slack in tubing to account for mounting configurations
- Accessibility to touchscreen
- UV light replacement, allow for 12" (30.5cm) for clearance
- Cartridge clearance
- Distance to the 2 electrical outlets
- Drain location for the line
- Placement location for the bladder tanks
- Type of system mounting device: Static, Sliding or Articulating mount
- Strength of wall or cabinet for installation

The G5 can be mounted in 1 of 3 ways; a static wall mount, a slide mount inside a cabinet, or an articulating wall mount. The rear waffle mounting plate affixed to the unit itself will serve as a mounting point for all 3 methods of mounting the system. Sterisil recommends anchoring the system into a wall stud. The drywall anchors should only be used when drilling into drywall.

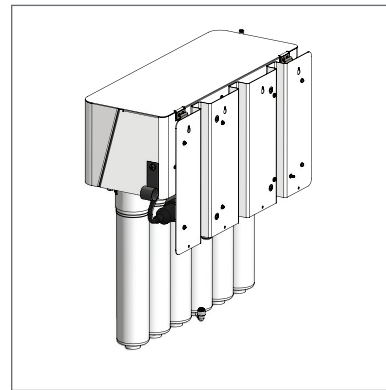
STATIC MOUNT - (BAG B.1)

Affixing the Static Plate to the Wall

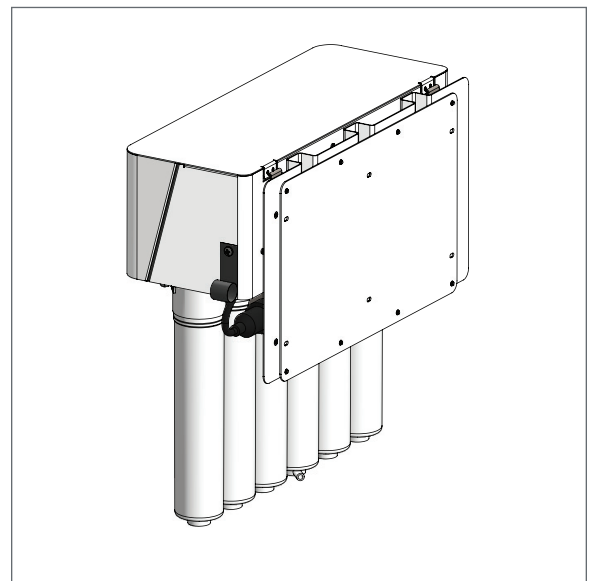
- Identify the slotted holes on the plate. These slots will be used to mount the plate to the wall.
- The static plate is symmetrical so any side can be up.
- Mock up your static mounting plate in the desired location. Ensure the plate is level and mark your holes.
- Drill and affix the plate to the wall.
- Verify the static plate is level.

Securing the G5 to the Static Mounting Plate

- Take 4 socket cap screws and screw them into the top row of the static mount. Do not fully tighten these screws.
- Take the unit (waffle plate already affixed) and line the key slots on the back of the waffle plate up with the socket cap screws. Slot the system downward so the unit hangs on the screws.
- Screw the remaining socket cap screws into the bottom row of threaded holes.
- Use your provided 5/32" Allen wrench to tighten the top and bottom rows.
- Verify the unit is level.



Waffle plate



Static mounting plate

SLIDE MOUNT - (BAG B.3)

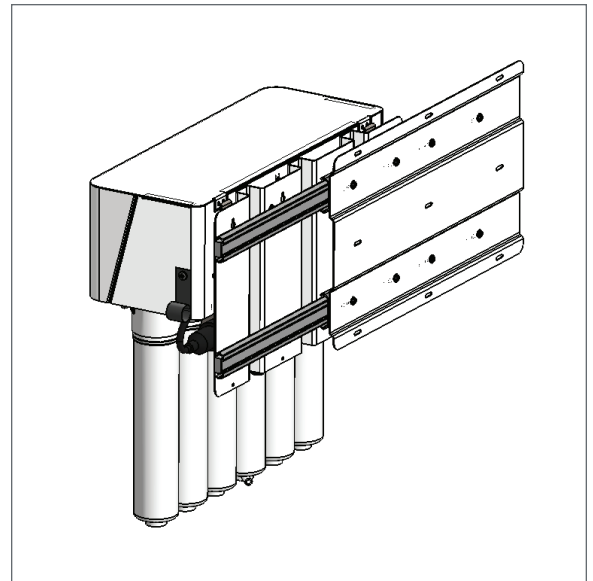
The Sterisil® System G5 will come with the slides affixed in the correct direction for proper maintenance. Please consider the orientation of the slides and affixing the slide mount to the wall mounting plate before you start.

Affixing the Slide Mount to the Wall

- Mark the holes on the slide mounting plate.
- Screw the mounting plate to the wall and ensure it is level.

Securing the G5 to the Slide Mount

- Take the system and line up the rails on the back of the waffle plate to the slides on the mounting plate. Slide the unit until you hear the rails snap into place.
- Verify it is level.



Slide mount

ARTICULATING MOUNT - (BAG B.2)

Affixing the Articulating Mount to the Wall

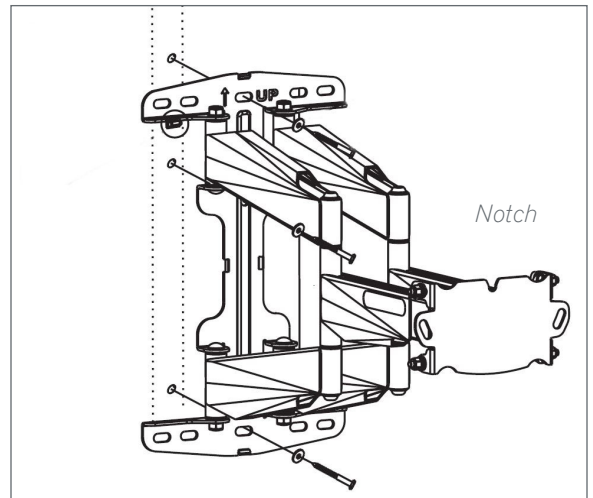


Use of the articulating mount requires the mount be anchored to wall studs. Under no circumstances should dry wall anchors be used with the articulating mount.

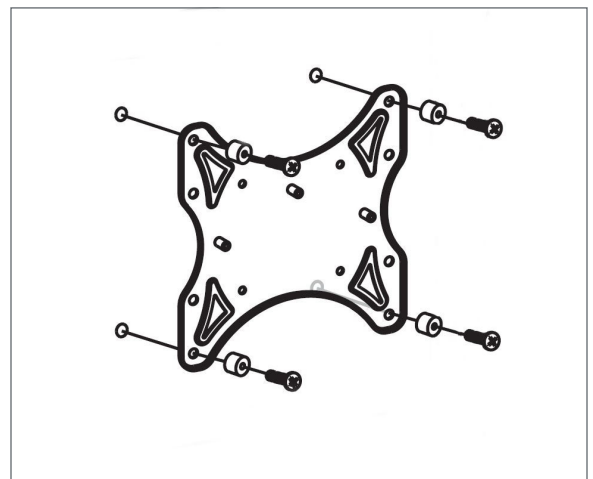
- Use articulating mount hardware (included in package).
- Place the mount against the wall with the “up” arrow facing the ceiling. Ensure the mount is level and mark your holes.
- Pilot holes are either 3/8” or 9/64”.
- Affix the mount to the wall with the appropriate combination of hardware for your mounting surface.
- Confirm it is level.

Securing the G5 to the Articulating Mount

- The system will come with the waffle plate attached. Tack the X-plate to the back of the waffle plate. You may need to place the unit on the front face to accomplish this. Please be mindful of the touchscreen if you do so. Use the packing foam to avoid damage to the touchscreen.
- Mount the X-plate to the waffle plate using the bolts and washers. Make sure the “up” arrow is facing the top of the system.
- You will notice a notch in the upper middle portion of the X-plate. Tighten a screw nut to this notch.
- Mount the system to the articulating mount by hanging the top screw nut affixed to the X-plate in the notch on the arm mount.
- Fasten the entire assembly to the wall mount with the two remaining nuts. Be sure the unit is level and tighten with 1/2” wrench.
- Properly orient the unit and tighten the forward tilt nuts once system is completely level.



Articulating mount



X-plate

PERIPHERAL COMPONENTS



Peripheral components – No more than 50 feet (15.2 meters) from the system.

Depending on the customer's specific configuration you may have optional components such as the Pre-filter Kit and Booster Pump plumbed between the municipal source and the red "SOURCE" port on the system.

G5 POWER ADAPTER



Only power adapters provided by Sterisil are approved for use with the G5. *The power adapter is rated for use below 5000m in elevation.*

- Select location within 6 feet (1.8 meters) of the outlet. Ensure there is no tension on the cable.
- If you choose to mount the power adapter on the wall, use hardware straps provided.

WATER STORAGE TANKS - (BAG C)

Storage tank sizes may vary with customer specifications and needs. Note: tank sizes will vary depending on Stage 5 selection or pre-install requirements. As a default, the RO tank will be the larger of the two. Storage tanks must be mounted within 50 feet (15.2 meters) of the system to maintain optimal water pressure. Set storage tanks in desired locations. A common location is under a sterilization center sink.

- Wrap the threads with Teflon tape (included) on each bladder tank. Install the 3/8" valve and hand tighten it to the larger RO tank. Do not over tighten this valve.
- Repeat this process with the 1/4" valve for the Dental Water Tank.
- Ensure the pressure of the tanks is between 8–10 psi (55.2 - 70 kPa) Schrader valved pressure gauge.

FAUCET(S) INSTALLATION

The bottle fill configuration includes a white Autoclave Faucet and a chrome Dental Water Faucet. Dental water is always plumbed to the chrome faucet. Typical mounting location is on a counter-top extended over a sink.

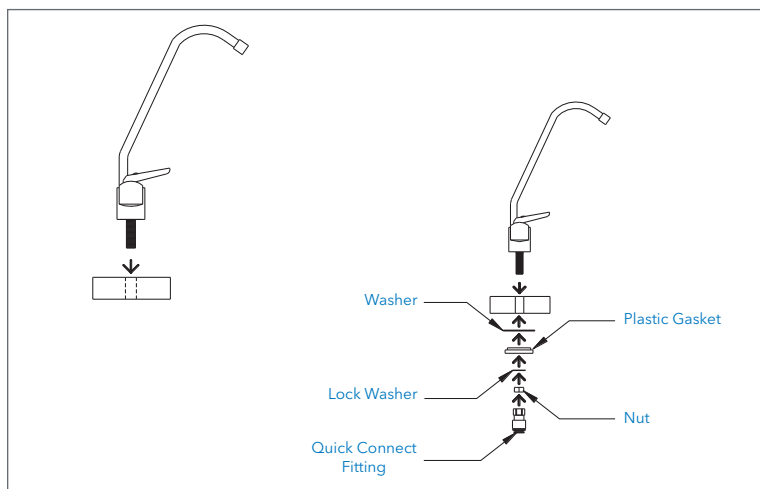


Direct feed systems only use the white Autoclave Faucet. Dental water is fed directly to the dental unit hand pieces.

COUNTER-TOP MOUNT

Faucet assembly instructions are located on the back of the faucet box. Visit sterisil.com/sterisil-system-g5 and watch the video for further clarification.

- Do not use the compression fittings provided. Instead use the provided push-fit connection.
- Drill 5/8" hole at the desired location.
- Place the faucet through the hole and mount using the hardware (included).
- Wrap the thread with thread tape prior to install.
- Place the under-sink mounting washer, and install the nut (included in box) and hand tighten.



PHASE 3: CARTRIDGES

PINCHING HAZARD: Before beginning this process take note to keep hands, hair, and exposed skin away from seams in the sheet metal or other components that might pose a potential pinching hazard.

- Remove the yellow cap from the top of the cartridges and write the date on the label with a permanent marker.
- Start by inserting the cartridges from left to right beginning with Stage 1.
Please note there are two Stage 4 Cartridges. They will both be positioned interchangeably in ports 4 and 5.
- Once all cartridges are installed, remove the brine plug from the bottom of the Stage 3 Cartridge.
- Insert the white brine tube into the bottom of Stage 3.
- Mount the Blank Cartridge clip on the wall near the system and place the Blank Cartridge in the clip. (Bag E)
Please note the Blank Cartridge is essential for trouble shooting possible blockages inside the system.

PHASE 4: SOURCE WATER AND TUBING

Ensure the source water to the Sterisil® System G5 remains closed until the procedure calls for it to be turned on.

SOURCE WATER CONNECTION - (BAG D)

Supply Tee

- Turn off the water on the municipal supply line. For now the main valve will remain closed.
- Remove the existing hose, wrap the threads with thread tape, and install the supply tee on the cold water supply. Tighten the tee with a wrench. Hot water should not be used to feed the system.



TUBING CONNECTIONS

To make a connection with quick connect fittings, you will simply push the tubing into the fitting until it stops. When making cuts, be sure to cut at a right angle to the tubing itself, and inspect the ends for burrs. Be sure to factor any movement in the system into the tubing length so as to not put tension on ports or components.

Source water (Supply Tee to Source Port)

(Red fitting collar):

OPTIONAL ADD-ONS: Booster Pump and Pre-filter Kit, see page 14.

- Insert the white 1/4" tubing into the supply tee. The other end of this tubing will run to the "SOURCE" port on the side of the system.
- Cut and install the Single Check Valve (SCV) on this line. (Bag D)
- Cut and install a 1/4" inline ball valve.

Dental Port (Blue fitting indicator):

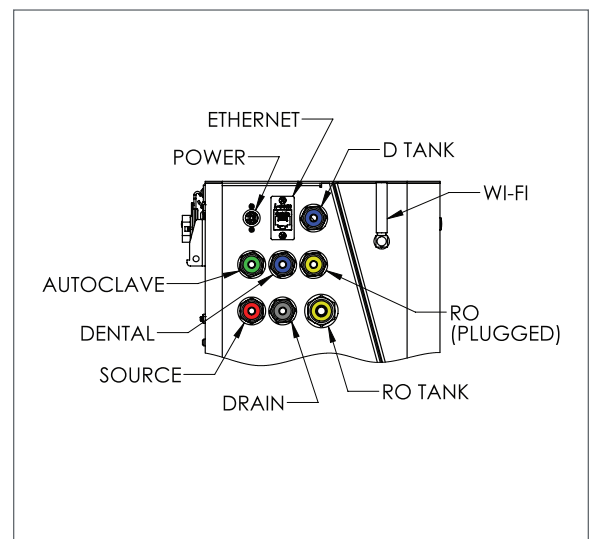
- Run a 1/4" line from the blue "DENTAL" port to the chrome Dental Water Faucet.



- Direct Feed System: Run a 1/4" line from the blue "DENTAL" port on the system to the customer supplied dental water supply line that connects to the dental chairs.

D Tank Port (Blue fitting Indicator):

- Run 1/4" tubing from the blue "DENTAL" port on the system to the 1/4" Tank Ball Valve on the smaller dental water storage tank.



Autoclave Port (Green fitting indicator):

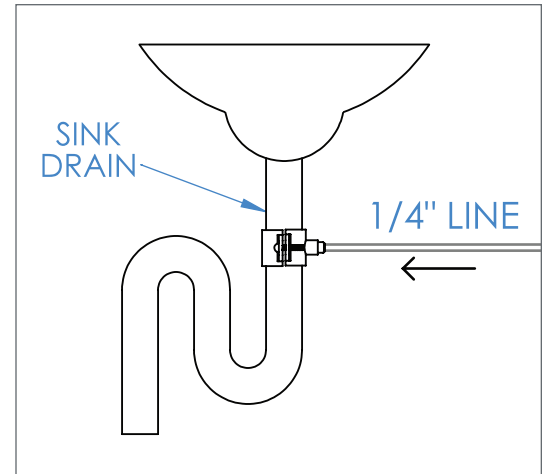
- Run 1/4" tubing from the green "AUTOCLAVE" port on the system to the white Autoclave Faucet.

Drain Port (Black fitting indicator): (Bag D)

- Run a 1/4" line from the black "DRAIN" port on the system to the Drain Saddle Valve (DSV).
 - Note: If you have a floor drain that is accessible you can always run tubing straight from the black "DRAIN" port on the system to the floor drain. If not, you will need to install the drain saddle valve on an existing drain pipe.

Drain saddle valve:

- Start by marking the drain pipe where you intend to drill your 1/4" hole. The DSV will need to be before or after the peatrap.
- Attach the gasket and mount the saddle valve with the provided nuts and bolts to the drain pipe.
- Once the DSV is properly mounted remove the gray collet from the hole.
- Drill through the hole into the drain pipe.
- When you drill the hole, be sure not to drill through the other side of the drain pipe.
- Clear any metal shavings from the hole, then reinsert the collet.
- Run 1/4" line from the black "DRAIN" port on the system to the DSV.



RO Tank Port (Yellow fitting indicator):

- Run a 3/8" line from the yellow "RO TANK" port on the system to the 3/8" Tank Ball Valve on the RO Water Storage Tank.

RO port (Yellow fitting indicator):

- If no auxiliary RO water will be used then this yellow RO port should remain plugged.

PHASE 5: POWERING UP, PROGRAMMING THE TOUCHSCREEN, AND FILLING THE TANKS

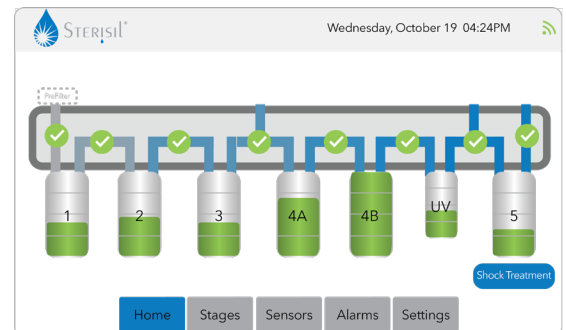
POWERING UP

Plug in the G5. The touchscreen will power on, and you will be brought to the home screen.

PROGRAMING THE TOUCHSCREEN

(All programing steps below are represented in the installation video at sterisil.com/sterisil-system-g5.)

- Bring up the details view by touching either the desired Stage number from the "Home" screen or select the "Stages" tab from the bottom row.
- Stage 1's lifespan is for 364 days. If the counter is not reading 364 days you will select "Replace component," select Stage 1 from the drop-down menu and hit replace.
- Stage 2's lifespan is based on liters processed and is effective up to 9,463L. If the counter is not reading 9,463L, you will select "Replace component," select Stage 2 from the drop-down menu and hit replace.



- Stage 3's lifespan is based on either a 364 day count or the TDS quality of water coming off it. If the counter on Stage 3 is not reading 364 days you will select "Replace component," select Stage 3 from the drop-down menu and hit replace.
- Stage 4's lifespan is a function of water quality. The alarm will sound if water quality reaches above 10ppm on the lead cartridge. No resetting is required upon initial installation.
- The UV light's life is based on both light intensity and a 364 day count. To reset the light monitor, select the "UV lamp" tab on the bottom row and select replace component.
- Stage 5's lifespan is based on a liter count. Each Stage 5 is marked with its liter capacity. From the Stage 5 details screen verify that your maximum capacity matches the capacity printed on the cartridge. If not, reset the count to the correct number.

FILLING THE TANKS

At this point both storage tank valves should be closed: meaning the ball valve knob is turned perpendicular to the tubing going in.

- Open the RO and Dental Storage Tanks by turning the tank ball valve knob in line with the tubing.



Confirm source water pressure is above 65 PSI (448 kPa) and below 125 PSI (862 kPa).

- Open the Source Water Valve at your municipal supply.
- The RO and dental tanks will slowly begin to fill. Allow for 8–12 hours for the tanks to completely fill.
- Check connections and ensure there are no leaks.

OPERATIONAL TEST

- Allow the RO and Dental Water Tanks to fill completely before performing the operational test.
- After four hours, open the valve at the white Autoclave Faucet, and start running water. At this point you should be looking for leaks anywhere in the system and connecting tubing. Once you have water at the faucet and confirmed there are no leaks, run for 2–3 minutes, then close the faucet.
- Repeat this process for the chrome Dental Water Faucet.



Direct Feed System: Run hand piece water at the furthest chair from the system. Check for leaks. Note: You will not have adequate water pressure until the Dental Tank has filled.

PROGRAMMING

CONNECTING TO THE NETWORK

- From the "Home" tab on the touchscreen, you will select the "Settings" tab.
- Select the "Network" button.
- Go to "Network interface," and select a method of connection from the drop-down menu.
- Select "Scan" and then select "SSID" to populate the list of possible networks.
- From the list, select the appropriate network and enter in the password if necessary and hit "Connect".
- Once you are connected you will want to select "Save setting."
- The Sterisil® System G5 must be on the same Wi-Fi connection as the computer.

PC APP

The PC app is essential to maximizing the potential of the G5. The app can aggregate data from multiple systems to be accessed on demand.

- To install the PC app, go to sterisil.com/sterisil-system-g5. Locate app under the docs tab.
- Follow the instructions to install.

OPTIONAL ADD-ONS

PRE-FILTER KIT (OPTIONAL COMPONENT)

Considerations:

Account for a minimum of 2" (5.1 cm) clearance at the bottom for future filter replacements. Location of Pre-filter and Inline Ball Valve diagram is on page 5.

- Turn off your source water.
- Find a location where you can drive the screws for the bracket into the wall that will reach both your source water line and your Sterisil® System G5 source line.
 - If you have a Sterisil® Booster Pump, the Pre-filter Kit will go before the Booster Pump on the source water line.
- Use a 15/64" to 1/4" drill bit to drill holes in which to put the anchors.
- Drive the #10 screws into the anchors through the holes in the metal mounting bracket.
- Use the thread tape to cover the threaded end of the push-in fitting adapter.
- Twist the two quick connect fitting adapters into the two holes on the head of the filter housing.
- Attach the filter housing to the mounting bracket using the screws provided.
- With towels ready to catch the leaking water, make a clean square cut on the source line using a tube cutter or sharp knife. Note: If the cut is jagged, the connection will not be secure and may leak. At the "IN" on the Pre-filter head, insert the source water line. At the "OUT" on the pre-filter head, insert the water line to the system. Make sure the tubing is fully connected. You should feel it lock into place, and you should not be able to pull it loose or have it slip out.
- Make a cut on the incoming line, and install your inline ball valve with the valve in the open position.
- Turn your source water back on.
- Check for any leaks. If there are any leaks, confirm all connections are attached securely.
- Turn your source water back off. Place one of the sediment filters in the housing, and turn your source water back on.

CHANGING THE FILTER

You will need to set the reminder for the appropriate interval. Please consult your Sterisil Water Compliance Specialist to confirm your replacement interval. Select the pre-filter icon, select "Replace component," and select the appropriate interval.

- Close the inline ball valves before and after the housing.
- Purge the pressure from the filter housing by depressing the red button on the top of lid.
- Unscrew the water reservoir lid to access and replace the micron filter inside.
- Reassemble and open inline and source water valves to restore flow to the system.
- You can visually confirm water is flowing freely.

BOOSTER PUMP (OPTIONAL COMPONENT) POWER ADAPTERS

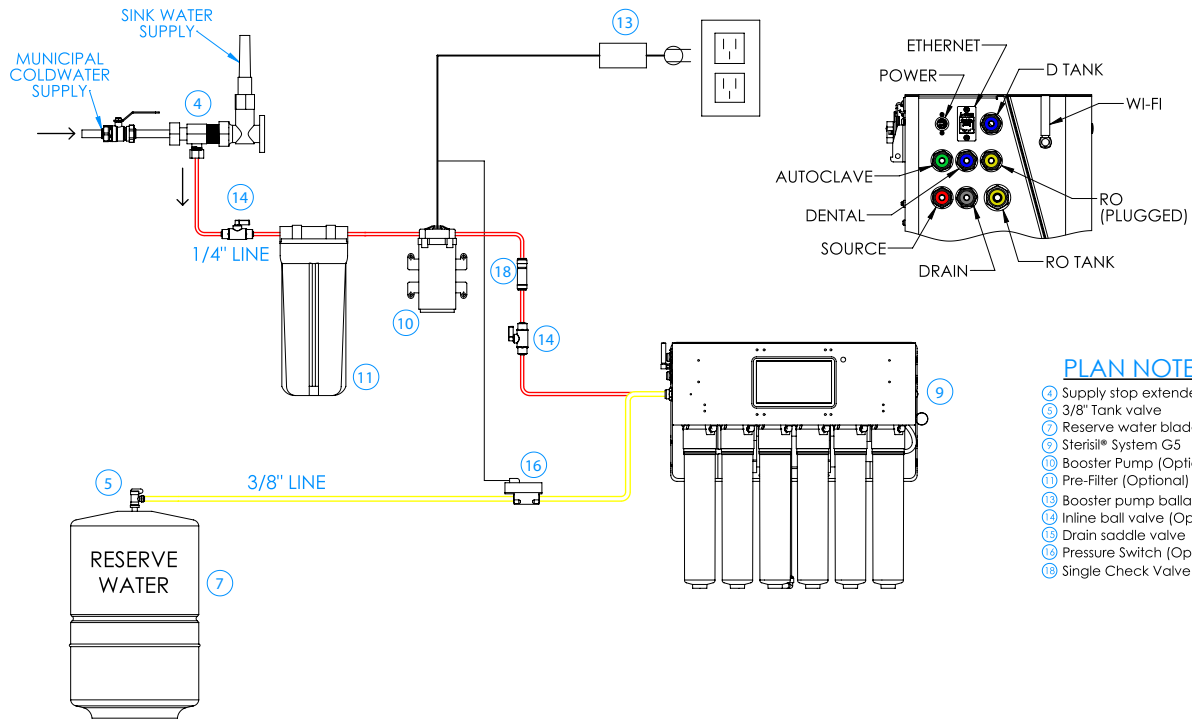
Considerations:

- Electrical cord length and transformer.
- Pressure Switch: Ensure it is no more than 3 feet (.9 meters) from the RO Tank and Booster Pump. If you have a Pre-filter Kit, install it before you install the Booster Pump.

Installation Steps:

- Turn off your source water and ensure both tanks are closed.
- Find a location where you can reach the source water tubing with the Booster Pump and the 3/8" RO water tubing with the pressure switch. The pressure switch is installed on the "RO tank" line.
- Use a 15/64" to 1/4" drill bit to drill pilot holes.
- Screw the #8 screws into the anchors through the holes on the Booster Pump.

- Make a clean square cut on the source line using a tube cutter or sharp knife. This cut should be close to the Pre-filter Kit if included. There are arrows on the Pump to show the direction of water flow. Insert the end coming from the municipal water source into the intake of the Booster Pump. The other end of the tubing will go into the outlet on the Booster Pump. Push tubing until it is fully inserted into each fitting.
- On the RO tank line, make a clean, square cut as close to the tank as possible. Your Pressure Switch will fit into this line. Push tubing until it is fully inserted into the fittings on the Pressure Switch. This Switch is multidirectional.
- The Pressure Switch will connect to both the white ballast and the power cord on the Booster Pump.
- Turn your source water back on, plug in the power cord, and run autoclave water for 60 seconds.
- Check for any leaks. If there are any leaks, ensure pieces are properly connected.



PLAN NOTES

- ④ Supply stop extended tee
- ⑤ 3/8" Tank valve
- ⑦ Reserve water bladder tank
- ⑧ Sterisil® System G5
- ⑩ Booster Pump (Optional)
- ⑪ Pre-Filter (Optional)
- ⑬ Booster pump ballast (Optional)
- ⑭ Inline ball valve (Optional)
- ⑮ Drain saddle valve
- ⑯ Pressure Switch (Optional)
- ⑰ Single Check Valve (SCV)

MAINTENANCE MANUAL

Thanks to an integrated network of sensors and smart technology, the Sterisil® System G5 is easier than ever to maintain. Visual alerts and audible alarms display prominently on the touchscreen and the PC app, notifying the user of the issue.

ALERTS - ATTENTION REQUIRED

A yellow bar will appear in the top of the touchscreen or on the PC app when a system function nears the threshold of normal operating parameters. Simply touch the yellow bar to reveal the details, and follow the “next step alert guidance” system to resolve the issue.

ALARMS - REQUIRES IMMEDIATE SERVICE

An alarm with a red bar indicates an issue demanding immediate attention. “Alarm: System Requires Immediate Service.” Simply touch the red bar or click on the PC app to reveal the details, and follow the “next step alert guidance” system to resolve the issue.

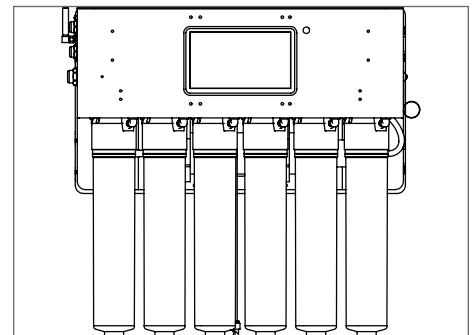
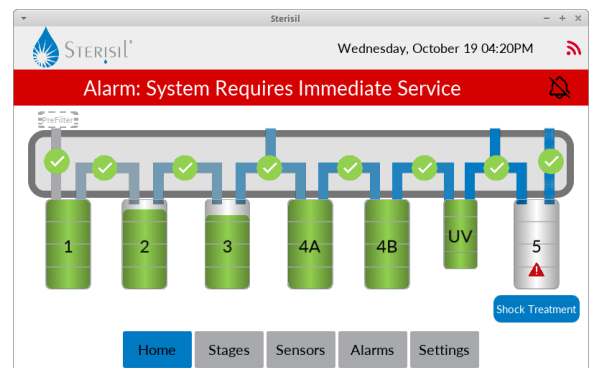
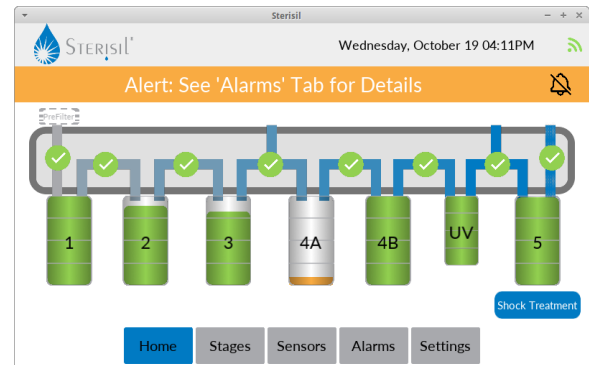
You may also bring up the details view by touching either the desired Stage number from the “Home” screen or select the “Stages” tab from the bottom row.

STEP BY STEP FILTER REPLACEMENT INSTRUCTIONS:

PINCHING HAZARD: Before beginning this process take note to keep hands, hair, and exposed skin away from seams in the sheet metal or other components that might pose a potential pinching hazard.

Thanks to internal valving, cartridge change outs are simple and easy. It is not necessary to shut off the source water from the supply tee. Water flow is automatically shut off when a cartridge is removed. Please have a towel nearby for excess water in cartridges.

1. Before removing a cartridge, place a large “X” on the one to be replaced to avoid any confusion when the new cartridge is introduced.
2. If you are changing the Stage 3 Cartridge, it will be necessary to remove the brine tube from the bottom of the cartridge prior to removal. Simply push in on the collet and pull out on the tubing to remove. You will reinstall this tube by pressing the tubing into the collet once the new Stage 3 Cartridge is in place.
3. To remove a cartridge, rotate counter clockwise until the cartridge is free of the valve head. A small amount of water may escape during this process. Don't panic, this is normal.
4. Before placing a new cartridge in the system, write the date in the space provided on the label. Remove the yellow cap from the top of cartridge, and rotate the cartridge clockwise into the valve head to secure it. Ensure cartridge is fully screwed in.
5. Reprogram the capacity monitoring from the touchscreen as referenced in Phase 5 of the installation procedure.
6. The final step when changing cartridges is to run some water for 60 seconds. For change outs on Stages 1-4, close the RO tank and run the autoclave water. For Stage 5 change outs, close the Dental Storage Tank and run the dental water (Stage 5).
7. Open all tanks to finish.
8. Cartridges can either be discarded in the trash or returned to Sterisil for recycling. For more information on our recycling program visit sterisil.com/recycle.





CHANGING THE CLASS A UV LIGHT

The Class A UV light on the Sterisil® System G5 is a powerful tool in bacteria reduction. Do not remove the UV bulb with the system plugged in. Never look directly at the bulb when it is powered up and emitting light. Removal and replacement of an expired bulb takes less than 5 minutes and requires no special tools. Replacement may be easier with the cartridges removed from port 5 and 6. Always wear clean gloves when handling a new UV bulb. If UV light falls below normal intensity, the system’s ability to adequately treat water may be compromised.

PINCHING HAZARD: Before beginning this process take note to keep hands, hair, and exposed skin away from seams in the sheet metal or other components that might pose a potential pinching hazard.

1. Start by unplugging the system from the power outlet.
2. Locate the UV housing behind the cartridges. Pull down on the UV power cable to feed slack for removing the bulb.
3. Press in on UV lamp harness (not the ribbed housing sleeve) on the right side of the housing and twist counterclockwise until the bulb releases.
4. Pull the bulb completely out of the housing.
5. Separate the bulb from the cable.
6. Remove the protective wrapping from the new bulb (grab bulb by green ceramic sections only or wear clean rubber gloves as a precaution).
7. Connect the bulb to the cable.
8. Slide bulb all the way in and carefully rotate clockwise until harness seats itself.
9. Push the excess length of cable back into the system.
10. Plug In system and wait for full power up.
11. Follow the procedure from Phase 5 in the installation manual to reset the monitor.

CUSTOMER SERVICE

Phone number: 719 622 7200 then press the option for “Customer Service” when prompted.

CARTRIDGE LIFE TABLE

Cartridges	Lifespan
Stage 1	1 year
Stage 2	9,463L
Stage 3	1 year or the TDS water quality
Stage 4A	Dependent on water quality and usage
Stage 4B	Dependent on water quality and usage
Class A UV Light	Dependent on water quality and usage
Stage 5 - 1,000L	1,000 liters of dental water
Stage 5 - 3,000L	3,000 liters of dental water
Stage 5 - 7,000L	7,000 liters of dental water
Stage 5 - 10,000L	10,000 liters of dental water

LIMITED WARRANTY

Sterisil® warrants the Sterisil® System G5 to be free from defects in parts, materials, manufacturing, or labor for a period of one year after the device is placed in service by the end user (the "Warranty Period"), and on select electrical components from the date of Sterisil's Purchase. This Limited Warranty does not include user replaceable parts required for routine maintenance of the product, or damage resulting from abuse or neglect of the product, and covers only use of the product for its intended purpose, and not for any other use. End users should contact Sterisil or an authorized distributor for claims arising during the Warranty Period. Sterisil reserves the right to repair or replace, in its discretion, any product that may exhibit a defect during the Warranty Period. Please note that the bladder tanks need to be replaced approximately every 2 years.

EXCEPT FOR THE FOREGOING LIMITED WARRANTY, ALL Sterisil® PRODUCTS ARE SOLD "AS IS." THE FOREGOING LIMITED WARRANTY IS EXCLUSIVE AND IN LIEU OF ALL OTHER WARRANTIES, EXPRESS OR IMPLIED, INCLUDING BUT NOT LIMITED TO THE IMPLIED WARRANTIES OF MERCHANTABILITY AND FITNESS FOR A PARTICULAR PURPOSE.


Sterisil® shall not be liable to any user of any product, or any other person, for any indirect, special, incidental, exemplary or consequential damages (including, without limitation, lost profits) resulting from use or inability to use any Sterisil product, arising from any cause of action whatsoever, including contract, warranty, strict liability, or negligence, even if Sterisil has been notified of the possibility of such damages. Under no circumstances shall the liability of Sterisil to the user or any other party exceed the purchase price of the product. No action under the foregoing limited warranty may be brought more than one (1) year after the expiration of the Warranty Period. Exclusive subject matter and personal jurisdiction for all disputes arising under this Limited Warranty shall be in the El Paso County District Court in Colorado Springs, Colorado.



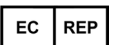
STERISIL® RECYCLING PROGRAM

Sterisil offers a free recycling program, allowing customers to recycle their used Sterisil® Cartridges by a click of a button. Simply visit sterisil.com/green or call us directly to request a free shipping label.

While other companies dispose **100%** of their used products to a landfill, Sterisil is able to recycle **91%** of our Straws and Cartridges. In addition to recycling, Sterisil contributes to a greener environment by being the only dental waterline company to offer a residual chemical treatment that meets BMP compliance by not increasing the mercury output in amalgam separators.

 Sterisil, Inc.
835 S. Hwy 105 Ste. D
Palmer Lake, CO USA 80133

EPA Est. No. 83315-CO-001
EPA Reg. No. 83315-2 (for residual treatment)
Patent No. 6,991,736



EMERGO EUROPE
Westervoortsedijk 60
6827 AT Arnhem
The Netherlands
GP9003.4