

# Sterisil® Dental Water Microbiological Cartridge

Sterisil® Dental Water Microbiological Cartridges are formulated and clinically proven to kill odor causing bacteria, and maintain dental unit waterlines to less than or equal to 10 CFU/ml.

Treated water should be continuously present in the dental unit water system.

## PLEASE SAVE THESE INSTRUCTIONS FOR FUTURE USE

Only selected information is contained on the cartridge packaging.

Active ingredient:

Silver ion\*: ..... 17.5%

Inert ingredients: ..... 82.5%

Total: ..... 100.0%

\*Bound to hydrogen form weak acid gelular cation exchange resin

## CAUTION

**KEEP OUT OF REACH OF CHILDREN**

GP3016.7

719 622 7200 or online at [Sterisil.com](http://Sterisil.com)



# DIRECTIONS FOR USE

## DIRECTIONS FOR USE

*IT IS A VIOLATION OF FEDERAL LAW TO USE THIS PRODUCT IN A MANNER INCONSISTENT WITH ITS LABELING.*

**NOTE:** This product is intended for use with potable water. Do not use softened water with this product. For optimum water flow, 40 PSI is recommended.

Sterisil® Dental Water Microbiological Cartridge is for use as an antimicrobial on dental unit waterlines. When used according to the label, optimum control of odor causing bacteria can be achieved.

Sterisil® Dental Water Microbiological Cartridge is available in multiple types in order to provide treatment for various dental waterline configurations. The straw model type is for use in dental bottles.

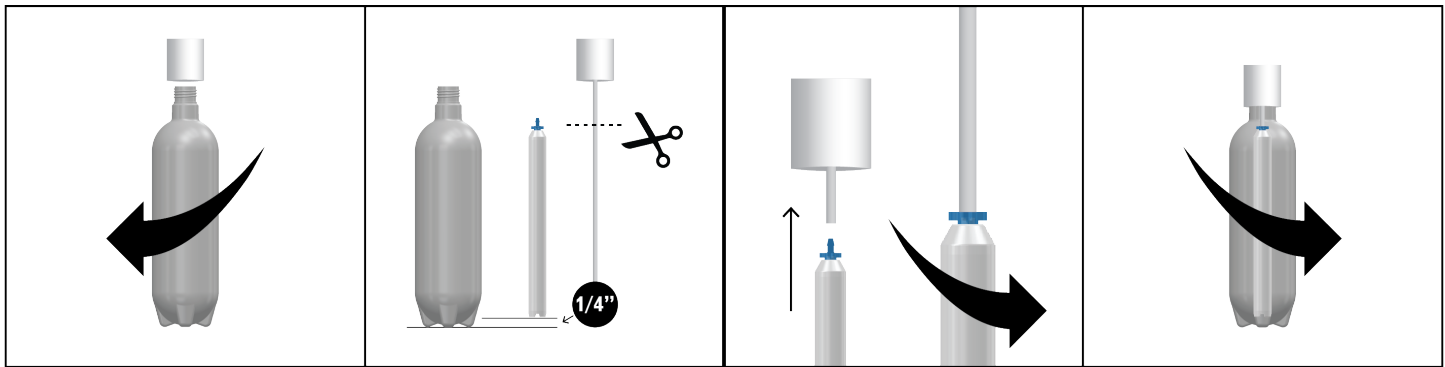
## INITIAL SHOCK TREATMENT

**To install for bottle use configuration:**

1. Remove the dental bottle from the manifold.
2. Cut the dental unit's existing pickup tube and install the straw. Be sure to allow for at least a 1/4" gap between the end of the straw and the bottom of the bottle.
3. Insert the luer lock (located on the straw) into the cut end of the pickup tube.
4. Ensure the straw is screwed tightly onto the luer lock.

For replacement: Twist off the straw while keeping the pickup tube and luer lock in place. Twist on a new straw.

Visit [Sterisil.com](http://Sterisil.com) to watch the installation video.



## INITIAL SHOCK TREATMENT

Sterisil® Dental Water Microbiological Cartridge is engineered to automatically produce a “shock” treatment after initial connection. Run all lines attached to the dental units into a white cup until blue tinted water appears exiting each line. Run no more than 6oz (3/4 cup) of water during this process. Allow all lines to remain unused for a minimum of 8 hours. For best results, allow shock to remain in the line(s) over the weekend. **Prior to use of dental unit, flush dental lines until blue tint disappears (approximately 4 ounces).**

## MAINTENANCE TREATMENT STRAW MODELS

Fill independent water bottle with distilled water, distilled quality water or good quality municipal water.\* The dental water is automatically treated as it runs through the straw. Replace the straw per the cartridge capacity & replacement schedule.

**\*STRAW PERFORMANCE REQUIREMENTS:** Source water for the S90/S365 should read 100 ppm or less on a Total Dissolved Solids (TDS) meter. Source water for S90m/S365m should read greater than 100 ppm, but no more than 250 ppm, on a TDS meter. If source water is greater than 250 ppm on a TDS meter, use distilled water or distilled quality water with a distilled straw.

It is recommended that you use a Sterisil® Bottle and clean and shock your bottle quarterly with a Citrisil™ shock tablet. If you have not purchased a Sterisil® Bottle we recommend you shock your bottles more frequently with a Citrisil™ shock tablet to inhibit the growth of any microorganisms that may be present.

EPA Reg. No. 83315-2  
EPA Est. No. 83315-CO-001  
Patent No 6 991 736

**CE**  
1639  
 Sterisil, Inc.  
835 S. Hwy 105 Ste. D  
Palmer Lake, CO USA 80133  
+1 719 622 7200

EC	REP
----	-----

EMERGO EUROPE  
Prinsessegracht 20  
2514 AP The Hague  
The Netherlands