



NXT Hg5<sup>®</sup> mini Amalgam Separator  
Installation and Operations Manual

Thoroughly read and understand instructions prior to installing, operating and servicing the NXT Hg5® mini Amalgam Separator. These instructions are also available on our website at [www.solmetex.com](http://www.solmetex.com).



## WARNING

The waste stream treated by the NXT Hg5® mini is discharge from a dental vacuum system and as such may contain concentrations of solid and soluble mercury and silver.

- Always wear protective gear when handling full NXT Hg5® mini collection containers (latex gloves, safety glasses or face shield) and dispose of per local regulations and codes.
- Full collection containers should be handled, stored and disposed of according to regulations applying to hazardous waste containing mercury.
- Any spills should be considered hazardous and should be handled in accordance with standard hazardous materials handling procedures.

## Solmetex Warranty

Solmetex NXT Hg5® mini Air Water Separators are warrantied against defects in material and workmanship for a period of two (2) years from the date of purchase, established by proof of purchase or formal warranty registration. During the warranty period, Solmetex will at its option repair or replace products that prove to be defective.

Solmetex NXT Hg5® Collection Containers are warrantied against defects in material and workmanship for a period of one (1) year from the date of purchase, established by proof of purchase or formal warranty registration. During the warranty period, Solmetex will at its option repair or replace products that prove to be defective.

Labor, transportation and service charges are not included.

## Limitations of Warranty

The warranty shall not apply to defects resulting from improper installation, maintenance, abuse, unauthorized modification, or operation outside of the environmental specifications for the product or damages that occur due to improper repackaging of equipment for return to Solmetex.

**Use of third party collection containers or line cleaners having a pH less than or equal to 6 or greater than 8 will void these warranties.**

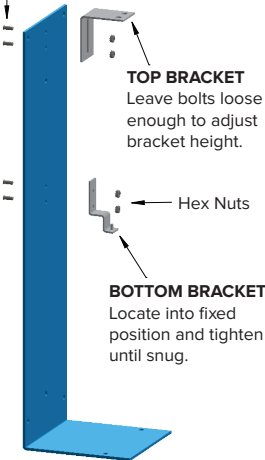
For a complete list of recommended cleaners, visit our website at [www.solmetex.com](http://www.solmetex.com).

No other warranty is expressed or implied. Solmetex specifically disclaims the implied warranties of merchantability and fitness for particular purpose.

# NXT Hg5<sup>®</sup> mini Amalgam Separator Initial Set-Up

## 1. THREADED INSERTS

Install (4) Captive Threaded Inserts from rear of backplate and secure firmly into place using (4) hex nuts provided.



### TOP BRACKET

Leave bolts loose enough to adjust bracket height.

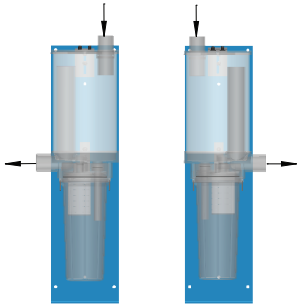
Hex Nuts

### BOTTOM BRACKET

Locate into fixed position and tighten until snug.

## 2. MOUNTING OPTIONS

**NOTE:** The NXT Hg5<sup>®</sup> mini may be installed in either a "right hand" or "left hand" position. Install as best fits your application.



"Left Hand"

NXT Hg5<sup>®</sup> mini

"Right Hand"

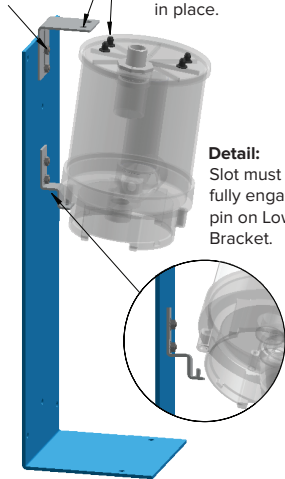
NXT Hg5<sup>®</sup> mini

## 3. ENGAGE SLOT ON PIN

**A.** Engage slot on pin (see detail below). Rotate assembly into place (keeping slot engaged on pin).

**C.** Tighten Top Bracket bolts until snug.

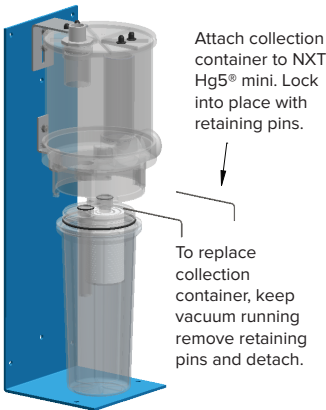
**B.** Push Top Bracket down over tabs until unit is secured in place.



**Detail:**  
Slot must fully engage pin on Lower Bracket.

## 4. COLLECTION CONTAINER

Always wear protective gear when handling a full collection container.



Attach collection container to NXT Hg5<sup>®</sup> mini. Lock into place with retaining pins.

To replace collection container, keep vacuum running remove retaining pins and detach.

# NXT Hg5<sup>®</sup> mini Installation Tips

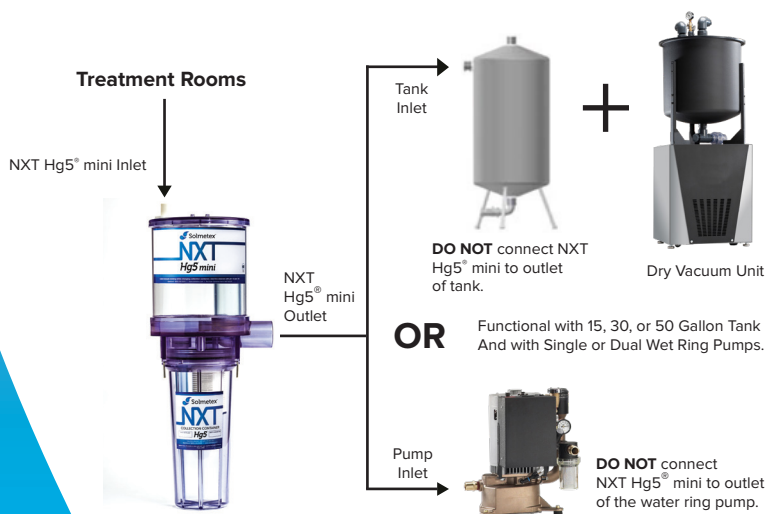
## Installation tips:

- Place in an easily accessible location for replacement of collection container.
- Place between treatment rooms and vacuum source.  
**DO NOT** connect to outlet of separating tank or water ring pump.
- The NXT Hg5<sup>®</sup> mini should be installed so that the outlet is higher than the tank or pump inlet.
- Use provided inlet and outlet couplings. **DO NOT** glue plumbing to the NXT Hg5<sup>®</sup> mini inlet and outlet.
- Securely mount or support the baseplate.
- If mounting to a wall, use the mounting holes provided on backplate.
- If attaching to the floor, use the mounting holes provided on bottom of backplate.
- Write the installation date on the collection container.
- Complete the registration form and return to Solmetex.

The NXT Hg5<sup>®</sup> mini Amalgam Separator is a Type 2 device with a maximum flow of 500 ml/min and maximum fillable volume of 950 ml.

## Environmental Specifications:

- Overall Dimensions: 11" W x 25" H x 8" D
- One NXT Hg5<sup>®</sup> mini will serve up to 4 chairs.
- minimize water lift height.
- Maximum Temperature = 120° F (52° C)
- Maximum Vacuum = 15" Hg (51 kPa)
- For dental use **ONLY**.



# Collection Container

Your collection container must be changed once every twelve (12) months or when the sediment level reaches the full line, whichever occurs first. Check the sediment level of the collection container weekly.

## Maintenance

Line rinsing & vacuum line cleaners - cleaners should be non-foaming, deodorizing, sanitizing & have a pH greater than 6 and less than or equal to 8.

Using line cleaners outside of this pH range will void the warranty.

For a complete list of recommended cleaners, visit our website at [www.solmetex.com](http://www.solmetex.com).

**With Dental Vacuum Systems: Follow manufacturer's instructions.**

Plan to rinse no more than 5 chairs every 10 minutes. Limit the total maximum flow to the NXT Hg5® mini during rinsing to 1 liter per minute. Rinsing too much or too rapidly can overfill the NXT Hg5® mini and could affect the unit's efficiency.

## Exclusive Remedies

The remedies provided herein are the buyer's sole and exclusive remedies. Solmetex shall not be liable for any direct, indirect, special, incidental or consequential damages, whether based on contract, tort or any other legal theory.

## Service & Troubleshooting

### NOTICE

- Refer to NXT Hg5® Collection Container Replacement & Recycle Procedure manual at [www.solmetex.com](http://www.solmetex.com) for removal and replacement of container.
- Always wear protective gear when handling full NXT Hg5® collection containers.
- Keep the vacuum system running during the entire collection container replacement procedure.
- These procedures should be performed only when no operatories are being used as loss of chairside vacuum may occur.

The NXT Hg5® mini is designed to provide years of trouble-free service, with minimal attention. In the unlikely event of system related problems, please review the following for product support.

**Q: Solids reach full line of collection container:**

**A:** Change the collection container.

**Q: Solids are above full line of collection container:**

**A:** Change the collection container. Inspect the top chamber for solids.

**Q: Top chamber has some solids:**

**A:** System is backed up.

- Turn on vacuum
- Remove pins
- Tilt container towards outlet pipe to allow air into top chamber
- Place container back on and insert pins

## Service & Troubleshooting (continued)

**Q: Top chamber is full with solids:**

**A:** System is in bypass.

- Reduction in suction
- Solids released into waste stream and environment
- Top chamber needs to be replaced
- Top chamber needs to be recycled

**Q: Little or no vacuum at the hand piece.**

**A:** Check sediment level of collection container, if full change the collection container.

- If the vacuum gauge reads normal but there is little or no vacuum to the hand piece, there is probably a clog or a leak between the hand piece and the NXT Hg5®mini.
- If the vacuum gauge reads lower than normal these are the possible causes:

**Did you just replace the collection container?**

**Yes:** Check installation of the new collection container. If the vacuum is low there is a possibility that the O-rings on the collection container did not seal into the receivers.

With the vacuum running, remove the collection container, check the O-rings and re-install per the collection container installation procedure.

**No:** If you have a solids collection cup (installed by others) - check & clean or replace element/screen if necessary.

**Check operation of the vacuum pump.**

- Check all flexible hose for kinks, breaks, or loose clamps.
- Check all connections for breaks or cracks.
- Listen for vacuum leaks.

**Q: Water in the upper chamber (Air Water Separator)**

**A:** Check sediment level of collection container, if full change collection container.

- Check the pH of vacuum line cleaner: if less than or equal to 6 or greater than 8 change collection container and line cleaner. Visit [www.solmetex.com](http://www.solmetex.com) for a recommended list of cleaners.
- Call or email your dental dealer for support if the problem cannot be solved easily.

**Q: The equipment/utility room has poor lighting:**

**A:** Bring a flashlight to check the container. Using a flashlight from the backside of the system and shining it forward will help determine the level of sedimentation.

# Visual Inspection Log



# Visual Inspection Log

Solmetex provides a Visual Inspection Log for weekly maintenance reporting. Online at:  
[www.solmetex.com/visualinspectionlog](http://www.solmetex.com/visualinspectionlog).

Use this log with the Hg5 Series of Amalgam Separators to ensure proper operation and maintenance. Visually inspect the collection container weekly to determine the level of solid waste. Collection container is replaced when solids reach the full line or once a year, whichever comes first.

Office Name: \_\_\_\_\_

Account Number: \_\_\_\_\_

[illegible]

[www.solmetex.com](http://www.solmetex.com)

1.800.216.5505

Post this log by your NXT Hg5 Amalgam Separator for weekly maintenance tracking.

Available to print online at:  
[www.solmetex.com/visualinspectionlog](http://www.solmetex.com/visualinspectionlog)

www.solmetex.com



In 1999, Solmetex designed the Hg5 that has quickly become the industry standard in Amalgam Separation. We have extensive experience in water chemistry, chemical separation science, process engineering, high performance manufacturing as well as federal, state and local regulations governing water and hazardous wastes.

What makes Solmetex different is our 'Total Solution Provider' concept – integrating waste handling and recycling into our complete product line to provide a truly *green* set of solutions. Solmetex is the global leader and our Hg5 series of systems is the gold standard in high performance amalgam separation.

Solmetex LLC  
50 Bearfoot Road  
Northborough, MA 01532

**800.216.5505**